



AN INDEPENDENT DISTRIBUTOR FOR OVER *100* YEARS

**Founded** in 1919 as Bearings Specialty Company, BSC Industries has grown over the decades to meet the needs of the industrial marketplace with world-class products and engineered solutions.

## History

### 1919

Founded as Bearings Specialty Company, located at 665 Beacon Street, Boston, supplying bearings to machine shops, manufacturers and other industrial firms.

### 1964

Ownership transfers to James J. Fitzpatrick and Peter Boyle. Product offering expands to include power transmission products. Opened Vermont and Maine locations.

### 1970s

Product offering expands to include motors and drives. Opened locations in New Hampshire and Worcester, MA.

### 1980s

Added Linear Motion and Motion Control products. Opened Western MA location.

### 1990s

Ownership transfers to Jim and Peter Fitzpatrick, sons of James J. Fitzpatrick. Product lines expand to include electrical, automation and pneumatic devices. Company moves to its new headquarters in Canton, MA.

### 2000s

Company acquires Machine Parts with branch locations in Connecticut and Rhode Island, and an Integrated Controls manufacturing facility in RI. Establishes a Class 10,000 Clean Room/Relubrication Center in Canton, MA.

### 2016

Bearings Specialty Company changes its name to BSC Industries, organized around four business platforms:

- Bearings & Power Transmission Products
- Electrical & Automation Products
- Engineering & Value Added Services
- Integrated Control Systems

### 2019

Company celebrates 100th anniversary.



Kenmore Square  
Site of original Bearings Specialty location



Corporate Headquarters - Canton, MA

# Why Choose BSC Industries?

## Customers partner with us when:

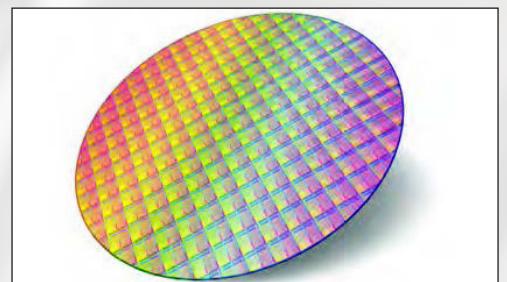
- Searching for a supplier with an extensive range of mechanical and electrical automation products
- Striving to achieve a competitive edge in the marketplace by sourcing the most cost-effective products with reasonable lead-times
- Attempting to streamline their supply chain
- Looking to introduce new products to the market with a shortened development cycle time
- Challenged with the requirement to improve the efficiency of production equipment to increase throughput
- Technical support is needed to source the best solutions for their applications
- They want to establish a long-term relationship with a supplier that has knowledgeable, reliable, and honest people that care about their business and are easy to work with

## OEM and MRO Markets We Serve

Food & Beverage Processing  
Packaging  
Semiconductor Equipment  
Medical Equipment  
Energy  
Printing  
Consumer Products  
Contract Manufacturing  
Automotive

Biotechnology  
Laboratory Automation  
Robotics  
System Integration  
Process Control  
Material Handling  
Telecommunication  
Machine Tool  
Antenna Positioning

Metal Forming & Stamping  
Municipalities  
Transportation  
Paper & Plastic Converting  
Test Equipment  
Wire & Cable  
HVAC & Climate Control  
Optical Devices  
Recycling



# Our Business Platforms

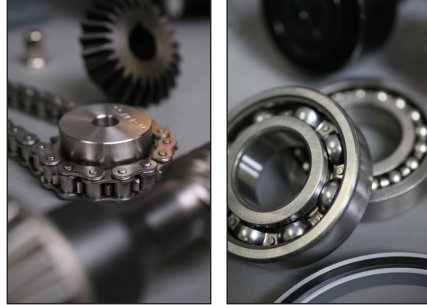
Since 1919, BSC Industries has remained committed to delivering world class products, engineered solutions, and outstanding customer service. Organized around four business platforms, the company is continuing on its path of serving customers not only in New England, but nationally and internationally.

## BSC INDUSTRIES

BEARINGS AND POWER TRANSMISSION PRODUCTS

### Bearings and Power Transmission Products

Our core product offering includes the complete range of bearing and power transmission products from the world's best manufacturers.



- BEARINGS-ROTARY & LINEAR
- BELTS AND PULLEYS
- BRONZE
- CHAIN & SPROCKETS
- CLUTCHES, BRAKES
- COUPLINGS & SHAFT COLLARS GEARS
- GEAR REDUCERS & GEAR MOTORS
- MOTORS-AC/DC
- SEALS & O-RINGS

## BSC INDUSTRIES

ELECTRICAL AND AUTOMATION PRODUCTS

### Electrical and Automation Products

Products ranging from AC drives, motors, enclosures, and connectors to DC motors, actuators, motor controls, power supplies, stepper motors, and more.



- AC/DC DRIVES & MOTORS
- CIRCUIT PROTECTION
- CONNECTORS
- ENCLOSURES
- MACHINE SAFETY
- PLC/HMI & PROCESS CONTROL
- PNEUMATICS
- PRECISION MOTION CONTROL
- WIRE/CABLE

## BSC INDUSTRIES

ENGINEERING AND VALUE ADDED SERVICES

### Engineering and Value Added Services

Extensive technical, engineering, and application support for our product lines along with other unique value added services.



- APPLICATION ANALYSIS
- TECHNICAL SUPPORT
- BEARING LUBRICATION SERVICES
- CLASS 10,000 CLEANROOM
- ELECTRO-MECHANICAL SUB-ASSEMBLY
- VENDOR MANAGED INVENTORY (VMI)

## BSC INDUSTRIES

INTEGRATED CONTROL SYSTEMS

### Integrated Control Systems

Complete design and integration of coordinated factory automation and process control systems.



- DESIGN/BUILD/TEST
- EXISTING MACHINE UPGRADES
- FIELD SERVICE
- MOTION/ TENSION CONTROLS
- PLC/HMI PROGRAMMING
- START-UP/ COMMISSIONING
- UL508A LISTED
- NFPA CERTIFIED

# ENGINEERING AND VALUE ADDED SERVICES



Since 1919, BSC Industries has been an independently owned industrial distributor with 7 conveniently located New England branch locations. Our knowledgeable sales staff is ready to assist you with your bearing, power transmission, electrical, automation, and control system requirements.

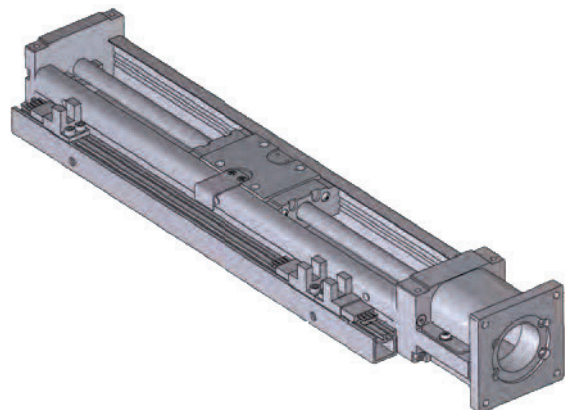
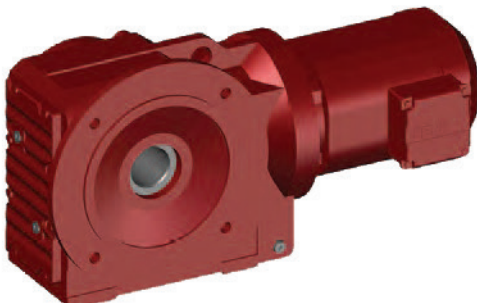
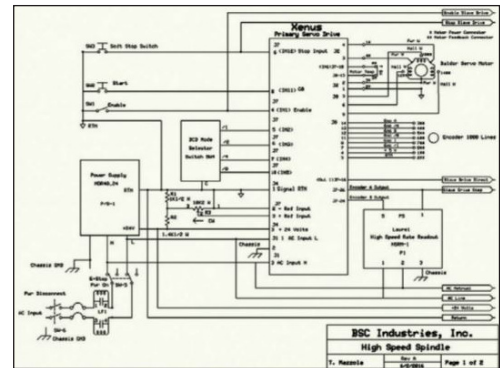
## Engineering and Application Development

Our experienced engineers and product specialists provide extensive technical and application support for all of the product lines we represent. We are involved in all aspects of product design and application development. Our strength lies in our ability to quickly assemble our resources to develop cost effective solutions for our customers. Whether it's a simple request to source a hard to find part, or a time consuming complex motion control system...we can help.



## In-House Application Expertise:

- Precision Motion Control
- Electrical Motors and Drives
- Process Controls
- Power Transmission/ Linear Motion
- Technical Application Review/Analysis
- System Specification Development
- Motor Sizing
- Cost and Performance Analysis
- Proof of Concept Prototypes
- Application Documentation / AutoCAD
- Programming and Start-Up Assistance
- Post Sale Support and Training



# ENGINEERING AND VALUE ADDED SERVICES

## Custom Lubrication

State of the art cleanroom facility for custom lubrication of bearings, linear motion products, and gear boxes.

- Certified Class 10,000 Environment
- Class 100 Laminar Flow Workstation
- Automated Cleaning/Degreasing System
- Manual and Automatic Lubrication Dispensers
- Extensive Selection of Lubricants
- Package Sealing Equipment



Canton MA Cleanroom

## Electro-Mechanical Sub-Assembly

Manufacturing electro-mechanical assemblies to assist our customers in reducing total manufacturing costs.

- Motor and Gearbox
- Wiring Harnesses
- Pneumatic Assemblies
- Special Actuators
- DIN Rail Assemblies

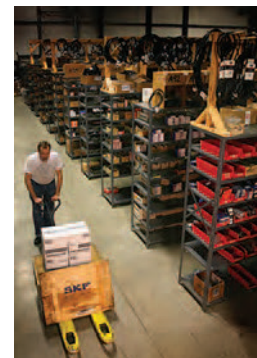


Westbrook ME Assembly Center

## Vendor Managed Inventory

Customized programs to manage customer inventory.

- Stockroom Management
- Breadman Replenishment
- Vendor Consolidation
- Dedicated Branch Inventory
- JIT Delivery
- Kanban Release



Managing Customer Inventory



## CORPORATE HEADQUARTERS

50 Energy Drive  
Canton, MA 02021  
USA  
Phone: 781-989-2222  
Fax: 781-989-2299  
Email: [Canton@bsc-ind.com](mailto:Canton@bsc-ind.com)  
[www.bsc-ind.com](http://www.bsc-ind.com)

## MASSACHUSETTS

### Canton

50 Energy Drive  
Canton, MA 02021  
Phone: 781-989-2222  
Fax: 781-989-2299  
Email: [Canton@bsc-ind.com](mailto:Canton@bsc-ind.com)

### Worcester

61 Milton Street  
Worcester, MA 01606  
Phone: 508-798-2222  
Fax: 508-798-9301  
Email: [Worcester@bsc-ind.com](mailto:Worcester@bsc-ind.com)

## MAINE

### Westbrook

70 Bradley Drive  
Westbrook, ME 04092  
Phone: 207-854-3333  
Fax: 207-854-3338  
Email: [Westbrook@bsc-ind.com](mailto:Westbrook@bsc-ind.com)

## RHODE ISLAND

### Providence

150 Corliss Street  
Providence, RI 02904  
Phone: 401-274-4333  
Fax: 401-751-0926  
Email: [Providence@bsc-ind.com](mailto:Providence@bsc-ind.com)

## NEW HAMPSHIRE

### Nashua

2 Townsend West, Unit #5  
Nashua, NH 03063  
Phone: 603-889-2222  
Fax: 603-889-0320  
Email: [Nashua@bsc-ind.com](mailto:Nashua@bsc-ind.com)

## CONNECTICUT

### Windsor Locks

1000 Old County Circle, Unit #116  
Windsor Locks, CT 06096  
Phone: 860-903-1111  
Fax: 860-903-1117  
Email: [WindsorLocks@bsc-ind.com](mailto:WindsorLocks@bsc-ind.com)

## VERMONT

### Williston

47 Commerce Street  
Williston, VT 05495  
Phone: 802-864-6735  
Fax: 802-865-4781  
Email: [Williston@bsc-ind.com](mailto:Williston@bsc-ind.com)

## INTEGRATED CONTROL SYSTEMS

150 Corliss Street  
Providence, RI 02904  
Phone: 401-274-4333  
Fax: 401-533-5434  
Email: [Controls@bsc-ind.com](mailto:Controls@bsc-ind.com)

