



AN INDEPENDENT DISTRIBUTOR FOR OVER *100* YEARS

Founded in 1919 as Bearings Specialty Company, BSC Industries has grown over the decades to meet the needs of the industrial marketplace with world-class products and engineered solutions.

History

1919

Founded as Bearings Specialty Company, located at 665 Beacon Street, Boston, supplying bearings to machine shops, manufacturers and other industrial firms.

1964

Ownership transfers to James J. Fitzpatrick and Peter Boyle. Product offering expands to include power transmission products. Opened Vermont and Maine locations.

1970s

Product offering expands to include motors and drives. Opened locations in New Hampshire and Worcester, MA.

1980s

Added Linear Motion and Motion Control products. Opened Western MA location.

1990s

Ownership transfers to Jim and Peter Fitzpatrick, sons of James J. Fitzpatrick. Product lines expand to include electrical, automation and pneumatic devices. Company moves to its new headquarters in Canton, MA.

2000s

Company acquires Machine Parts with branch locations in Connecticut and Rhode Island, and an Integrated Controls manufacturing facility in RI. Establishes a Class 10,000 Clean Room/Relubrication Center in Canton, MA.

2016

Bearings Specialty Company changes its name to BSC Industries, organized around four business platforms:

- Bearings & Power Transmission Products
- Electrical & Automation Products
- Engineering & Value Added Services
- Integrated Control Systems

2019

Company celebrates 100th anniversary.



Kenmore Square
Site of original Bearings Specialty location



Corporate Headquarters - Canton, MA

Why Choose BSC Industries?

Customers partner with us when:

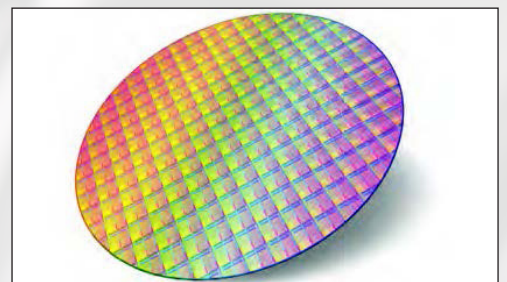
- Searching for a supplier with an extensive range of mechanical and electrical automation products
- Striving to achieve a competitive edge in the marketplace by sourcing the most cost-effective products with reasonable lead-times
- Attempting to streamline their supply chain
- Looking to introduce new products to the market with a shortened development cycle time
- Challenged with the requirement to improve the efficiency of production equipment to increase throughput
- Technical support is needed to source the best solutions for their applications
- They want to establish a long-term relationship with a supplier that has knowledgeable, reliable, and honest people that care about their business and are easy to work with

OEM and MRO Markets We Serve

Food & Beverage Processing
Packaging
Semiconductor Equipment
Medical Equipment
Energy
Printing
Consumer Products
Contract Manufacturing
Automotive

Biotechnology
Laboratory Automation
Robotics
System Integration
Process Control
Material Handling
Telecommunication
Machine Tool
Antenna Positioning

Metal Forming & Stamping
Municipalities
Transportation
Paper & Plastic Converting
Test Equipment
Wire & Cable
HVAC & Climate Control
Optical Devices
Recycling



Our Business Platforms

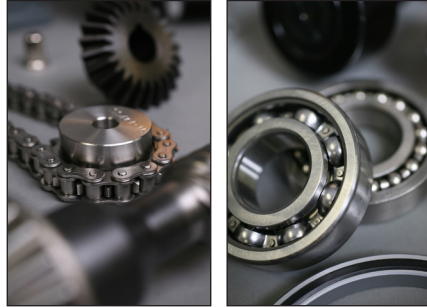
Since 1919, BSC Industries has remained committed to delivering world class products, engineered solutions, and outstanding customer service. Organized around four business platforms, the company is continuing on its path of serving customers not only in New England, but nationally and internationally.

BSC INDUSTRIES

BEARINGS AND POWER TRANSMISSION PRODUCTS

Bearings and Power Transmission Products

Our core product offering includes the complete range of bearing and power transmission products from the world's best manufacturers.



- BEARINGS-ROTARY & LINEAR
- BELTS AND PULLEYS
- BRONZE
- CHAIN & SPROCKETS
- CLUTCHES, BRAKES
- COUPLINGS & SHAFT COLLARS GEARS
- GEAR REDUCERS & GEAR MOTORS
- MOTORS-AC/DC
- SEALS & O-RINGS

BSC INDUSTRIES

ELECTRICAL AND AUTOMATION PRODUCTS

Electrical and Automation Products

Products ranging from AC drives, motors, enclosures, and connectors to DC motors, actuators, motor controls, power supplies, stepper motors, and more.



- AC/DC DRIVES & MOTORS
- CIRCUIT PROTECTION
- CONNECTORS
- ENCLOSURES
- MACHINE SAFETY
- PLC/HMI & PROCESS CONTROL
- PNEUMATICS
- PRECISION MOTION CONTROL
- WIRE/CABLE

BSC INDUSTRIES

ENGINEERING AND VALUE ADDED SERVICES

Engineering and Value Added Services

Extensive technical, engineering, and application support for our product lines along with other unique value added services.



- APPLICATION ANALYSIS
- TECHNICAL SUPPORT
- BEARING LUBRICATION SERVICES
- CLASS 10,000 CLEANROOM
- ELECTRO-MECHANICAL SUB-ASSEMBLY
- VENDOR MANAGED INVENTORY (VMI)

BSC INDUSTRIES

INTEGRATED CONTROL SYSTEMS

Integrated Control Systems

Complete design and integration of coordinated factory automation and process control systems.



- DESIGN/BUILD/TEST
- EXISTING MACHINE UPGRADES
- FIELD SERVICE
- MOTION/ TENSION CONTROLS
- PLC/HMI PROGRAMMING
- START-UP/ COMMISSIONING
- UL508A LISTED
- NFPA CERTIFIED

BEARINGS AND POWER TRANSMISSION PRODUCTS



BEARINGS AND POWER TRANSMISSION PRODUCTS

Since 1919, BSC Industries has been an independently owned industrial distributor with 7 conveniently located New England branch locations. Our knowledgeable sales staff is ready to assist you with your bearing, power transmission, electrical, automation, and control system requirements.



Boston Gear / TB Wood's / Warner Electric



Rod End and Spherical Bearings



AC and DC Motors and Inverter Drives



AC and DC Motors and Gearmotors



Link Belting and Keyless Locking Devices



Industrial Belts, Sprockets, Sheaves



Bearings and Bearing Components



Innovation, Know-how & Originality

Linear Motion and Bearing Products



LEADERS IN BRONZE BEARINGS...and MORE

Bronze Bushings and TU Steel Backed Bearings



an SKF Group company

Thin Section and Slewing Ring Bearings



Ball and Roller Bearings



AC and DC Motors



Industrial Lubricants



Sprockets, Gears, Sheaves, Couplings, Screw Conveyors



Linear Guides, Ball Bushings, Actuators



Speed Reducers and Gear Motors



Bearings and Linear Motion Products



Ball and Roller Bearings



Stepper Motors and Drives, AC/DC Gearmotors and Drives



Ball and Roller Bearings



Climax, Nice, Heim, PIC, Lubron, Spherco



Browning / Kopflex / McGill / Morse / SealMaster / Systemplast



Bearings, Gearboxes, Conveyor Components, Couplings



INA / FAG / BARDEN



Speed Reducers and Gearmotors



Bearings, Seals, Mechatronics, Lubrication



Pneumatic Actuators and Controls, Accessories



Gearboxes and Gearmotors



The Mark of Linear Motion

Linear Guides, Ball Screws, Actuators



Linear Motion. Optimized.

Linear Bearings and Shafting, Ball Screws, Actuators, Gearheads



Bearings, Power Transmission, Lubrication, Seals



Roller Chain, Engineered Class Chain



Wire Harnesses, Molded Cable Assemblies

BEARINGS AND POWER TRANSMISSION PRODUCTS

PRODUCT GROUPS

| | | | | | |
|-----------------|--|--|--|----------------------------------|------------------------------------|
| BEARINGS | Rollway | USTsubaki | Ruland Mfg | LINEAR MOTION | MOTORS |
| Alinbal | Schatz | CLUTCHES & BRAKES | Stafford | Bishop Wisecarver | ABB |
| AMI | SealMaster | Carlson | Stock Drive | Bosch Rexroth | AO Smith |
| Aurora | SKF | Cleveland | TB Wood's | CPC | Bodine |
| Auburn | Smith | Formsprag | US Tsubaki | Danaher | Danaher |
| Barden | Spherco | Lenze | Zeromax | Deltron | Groschopp |
| Berliss | Timken | Magpower | ELECTRIC ACTUATORS | Duff Norton | Koco Motion |
| Browning | Torrington | Morse | Exlar | Garlock | Leeson |
| Carter | Triangle | Nexen/Horton | Koco Motion | Igus | Lenze |
| EPT | BELTS & PULLEYS | Stearns | SMC | IKO | Marathon |
| EZO / SPB | Ammeraal | Warner Electric | Thomson | INA | Nidec/Control Techniques |
| Fafnir | B&B Mfg | CONVEYOR BELTS & COMPONENTS | Warner | Joyce/Dayton | Oriental Motor |
| FAG | Berg | Ammeraal | GEARS | Kabelschlepp | Overly Hautz |
| FK | Brecoflex | Beltservice | Berg | Lee Linear | SEW Eurodrive |
| FYH | Browning | Brecoflex | Boston Gear | Macron | Superior |
| Garlock | Fenner | Browning | Globe | LM 76 | US Motor |
| General | Gates | Chantland | Linn | NB Corp | WEG |
| GGB | Jason | Habasit | Martin | Nook | World Wide |
| GMN | Martin | Intralox | Mitrpak | NSK | MOTOR DRIVES & CONTROLS |
| Heim | Maska | Keystone | PIC | Pacific Bearing | ABB |
| Hub City | Mectrol | KVP | Stock Drive | Rockford | AC Tech/Lenze |
| Igus | Morse | Martin | GEAR REDUCERS & GEAR MOTORS | Rollon | Benshaw |
| IKO | Stock Drive | Mathews | ABB | Roton | Bodine |
| INA | BRONZE | Mectrol | Bodine | SKF | Boston Gear |
| IPTCI | Boston Gear | Mulhern | Bonfiglioli | THK | Contrex |
| Jilson | Bunting | PCI | Boston Gear | Thomson | Copley Controls |
| Kaydon | Graphalloy | Pobco | Browning | Warner | Danaher |
| Kilian | Isostatic | Slideways | Browning | WON ST | LUBRICANTS |
| Koyo | Oilite | Valu Guide | Cleveland | Lubriko | Danfoss/Vacon |
| Link Belt | Royersford | Van Gorp | Cone Drive | Lubriplate | Dart |
| MB Mfg | CHAIN, SPROCKETS, TENSIONERS & IDLERS | Rexnord | David Brown | Perma | KB Electronics |
| McGill | Allied-Locke | System Plast | EPT | Simatec | Kollmorgen |
| Moline | Ametric | COUPLINGS & SHAFT COLLARS | Grove | SKF | Nidec/Control Techniques |
| Morse | Boston Gear | Berg | Hub City | Superlube | Oriental Motor |
| MPB | Brewer | Boston Gear | Leeson | Timken | Parker SSD |
| MRC | Bowning | Browning | Lenze | MATERIAL HANDLING | Sprecher + Schuh |
| Nachi | Dalton | Climax Metal | Morse | Conveyors Inc. | Sumitomo |
| New Departure | Fenner | Collars & Couplings | Motovario | Martin | WEG |
| New Hampshire | Gates | Dalton | Nord | Omni Metal Craft | PNEUMATICS |
| Nice | HKK | Helical | Oriental Motor | Screw Conveyor | Bimba |
| NSK | Lovejoy | Huco | Rexnord | Smalis | Boston Gear |
| NTN | Martin | Lovejoy | SEW Eurodrive | MINIATURE PRECISION PARTS | Festo |
| NTN | Morse | Martin | Stober | Berg | SMC |
| Osborn | Peer | Morse | Sumitomo | PRECISION GEARHEADS | Apex Dynamics |
| Peer | Renold Jeffrey | Rexnord | Winsmith | Nordex | Carson Mfg |
| QM | Rexnord | R&W | Zeromax | PIC | CGI |
| RBC Bearings | SKF | | | Stock Drive | GAM |

BEARINGS AND POWER TRANSMISSION PRODUCTS

PRODUCT GROUPS (continued)

| | | | | | |
|-----------------------------------|------------------|---------------------------------|----------------------------|------------------------------|---------------------------|
| PRECISION GEARHEADS (cont) | Century Spring | Whittet Higgins | SEALS & O-RINGS | National O-Ring | Encoder Products |
| Micron/Thomson | Lee Spring | SEALANTS & ADHESIVES | CR/SKF | US Seal | Keyence |
| RETAINERS & SPRINGS | Rotorclip | Never-Seez | Dichtomatik | Timken | Red Lion |
| Associated Spring | Spirolox | Sprayon | Garlock | SENSORS & DEVICES | US Digital |
| | Standard Locknut | | Hutchinson | Banner | WIRE & HARNESS |
| | Waldes Truarc | | National Oil Seal | Dynapar | V-Tron |

SUPPLIERS

| | | | | | |
|--------------------|---------------------|----------------|--------------------------|-------------------|------------------|
| A | Chantland | Graphalloy | Link Belt | Oriental Motor | Smalis |
| ABB | Cleveland | Groschopp | Linn | Osborn | Smith |
| AC Tech | Climax Metal | Grove | LM 76 | Overly Hautz | Spherco |
| Alemite | Collars & Couplings | H | Loctite | P | Spirolox |
| Alinabal | Cone Drive | Habasit | Lovejoy | Pacific Bearing | Sprayon |
| Allied-Locke | Contrex | Harwal | Lubriko | Parker SSD | Sprecher + Schuh |
| Altra | Conveyors Inc | Heim | Lubriplate | PCI | Stafford |
| Ametric | Copley Controls | Helical | M | Peer | Standard Locknut |
| AMI | CPC | HKK | Macron | Perma | Stock Drive |
| Ammeraal Beltech | CR/SKF | Hub City | Magpower | PIC | Sumitomo |
| Anaheim Automation | D | Huco | Marathon | Pobco | Superior |
| AO Smith | Dalton | Hutchinson | Martin | Q | Superlube |
| Apex Dynamics | Danaher | I | Maska | QIE | System Plast |
| Associated Spring | Danfoss | Igus | Mathews | QM Bearings | T |
| Auburn | Dart | IKO | McGill | R | THK |
| Aurora | David Brown | INA | Mectrol | R&W | Thomson |
| B | Deltron | Intralox | Micron/Thomson | RBC | Timken |
| B & B Mfg | Dichtomatik | IPTCI | Mitropak | Ramco Innovations | Torrington |
| Banner | Duff Norton | Isostatic | Moline | Red Lion | Triangle |
| Barden | Dynapar | J | Morse | Regal Beloit | Turck |
| Beltservice | E | Jason | Motovario | Renold Jeffrey | U |
| Benshaw | Encoder Products | Jilson | MPB | Rexnord | US Digital |
| Berg | EPT | Joyce/Dayton | MRC | RHP | US Motor |
| Berliss | Exlar | K | Mulhern | Rockford | US Seal |
| Bishop Wisecarver | EZO | Kabelschlepp | N | Rollon | USTsubaki |
| Bodine | F | Kaydon | Nachi | Rollway | V |
| Bonfiglioli | Fafnir | KB Electronics | National Oil Seal | Roton | Vacon |
| Bosch/Rexroth | FAG | KEP | National O-Ring | Rotorclip | Valu Guide |
| Boston Gear | Fenner | Kerk | NB Corp | Royersford | Van Gorp |
| Brecoflex | Festo | Keyence | Never-Seez | Ruland | V-Tron |
| Brewer | FK | Keystone | New Hampshire | S | W |
| Browning | Formsprag | Kilian | Nidec/Control Techniques | Schaefer | Waldes Truarc |
| Bunting | FYH | Kluber | Nook | Schatz | Warner Electric |
| C | G | Koco Motion | Nord | Screw Conveyor | WEG |
| C3 Controls | GAM | Koyo | Nordex | SealMaster | Whittet Higgins |
| Carlson | Garlock | KVP | NSK | SEW Eurodrive | Winsmith |
| Carson Mfg | Gates | L | NTN | Simatec | WON ST |
| Carter | General | Lee Linear | Nye | SKF | World Wide |
| Castrol | GGB | Lee Spring | O | Slideways | Z |
| Century Spring | Gits | Leeson | Oilite | Smalley | Zeromax |
| CGI | GMN | Lenze | Omni Metal Craft | SMC | |



CORPORATE HEADQUARTERS

50 Energy Drive
Canton, MA 02021
USA
Phone: 781-989-2222
Fax: 781-989-2299
Email: Canton@bsc-ind.com
www.bsc-ind.com

MASSACHUSETTS

Canton

50 Energy Drive
Canton, MA 02021
Phone: 781-989-2222
Fax: 781-989-2299
Email: Canton@bsc-ind.com

Worcester

61 Milton Street
Worcester, MA 01606
Phone: 508-798-2222
Fax: 508-798-9301
Email: Worcester@bsc-ind.com

MAINE

Westbrook

70 Bradley Drive
Westbrook, ME 04092
Phone: 207-854-3333
Fax: 207-854-3338
Email: Westbrook@bsc-ind.com

RHODE ISLAND

Providence

150 Corliss Street
Providence, RI 02904
Phone: 401-274-4333
Fax: 401-751-0926
Email: Providence@bsc-ind.com

NEW HAMPSHIRE

Nashua

2 Townsend West, Unit #5
Nashua, NH 03063
Phone: 603-889-2222
Fax: 603-889-0320
Email: Nashua@bsc-ind.com

CONNECTICUT

Windsor Locks

1000 Old County Circle, Unit #116
Windsor Locks, CT 06096
Phone: 860-903-1111
Fax: 860-903-1117
Email: WindsorLocks@bsc-ind.com

VERMONT

Williston

47 Commerce Street
Williston, VT 05495
Phone: 802-864-6735
Fax: 802-865-4781
Email: Williston@bsc-ind.com

INTEGRATED CONTROL SYSTEMS

150 Corliss Street
Providence, RI 02904
Phone: 401-274-4333
Fax: 401-533-5434
Email: Controls@bsc-ind.com

